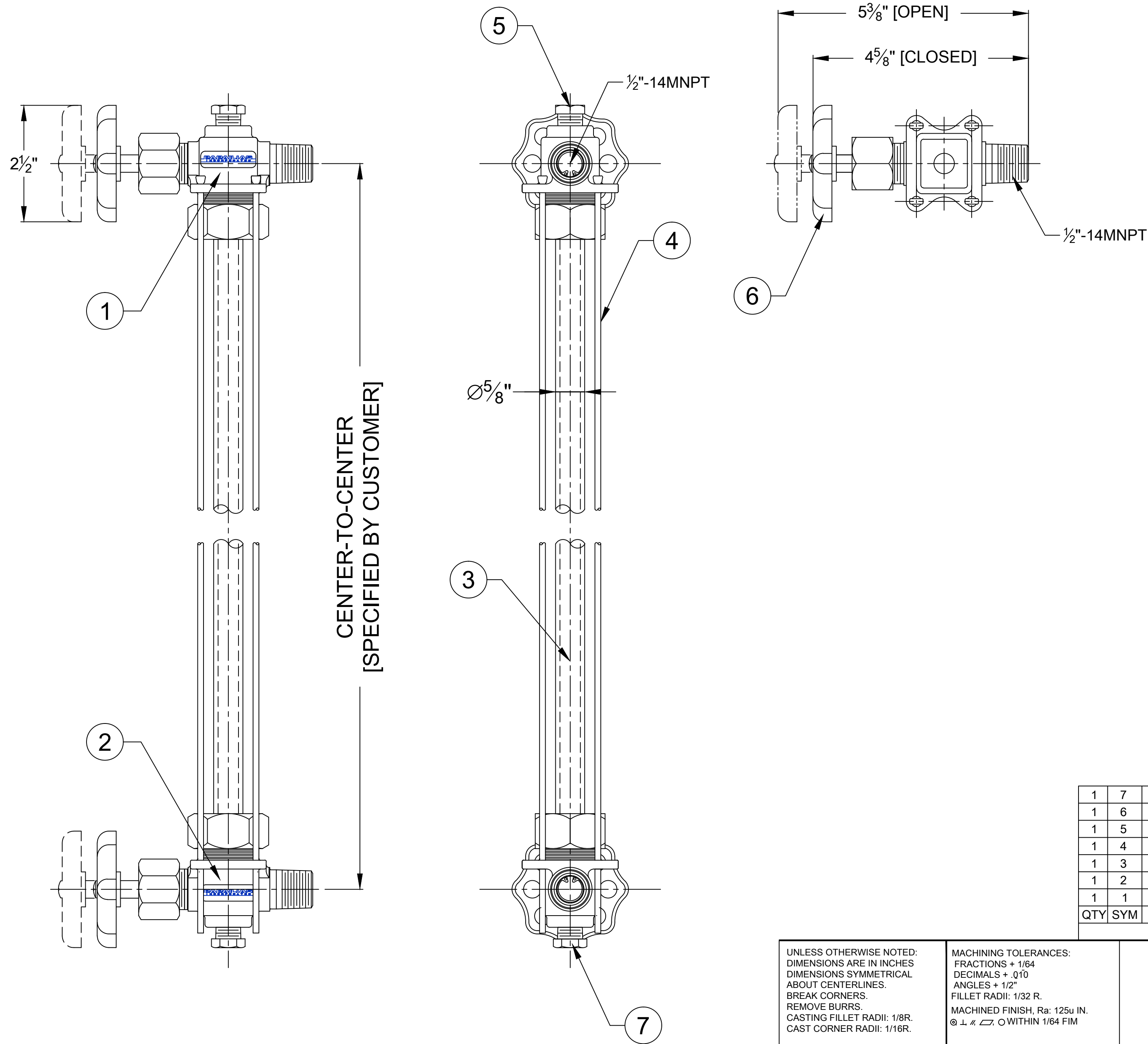



| REVISION HISTORY | | | | |
|------------------|-----|----------------|----------|----------|
| ZONE | REV | DESCRIPTION | DATE | APPROVED |
| | 0 | ORIGINAL ISSUE | 05/09/13 | GCP |



NOTES:
 1. SHIPS UN-ASSEMBLED
 2. CUSTOMER TO SPECIFY CENTER-TO-CENTER.

| QTY | SYM | DESCRIPTION | MATERIAL | SPECIFICATION |
|-----|-----|--------------------|-----------------|----------------|
| 1 | 7 | DRAIN, VENT, 1/4" | STAINLESS STEEL | T316 |
| 1 | 6 | HANWDHEEL | ALUMINIUM | COMM'L |
| 1 | 5 | PLUG, VENT, 1/4" | STAINLESS STEEL | T316 |
| 1 | 4 | GUARD RODS | STAINLESS STEEL | T316 |
| 1 | 3 | TUBE | BOROSILICATE | SA516 GRADE 70 |
| 1 | 2 | GAUGE VALVE, LOWER | STAINLESS STEEL | T316 |
| 1 | 1 | GAUGE VALVE, UPPER | STAINLESS STEEL | T316 |

BILL OF MATERIAL

| | | | | | |
|---|--|---|---------------------------------------|---|--------------|
| UNLESS OTHERWISE NOTED: DIMENSIONS ARE IN INCHES DIMENSIONS SYMMETRICAL ABOUT CENTERLINES. BREAK CORNERS. REMOVE BURRS. CASTING FILLET RADII: 1/8R. CAST CORNER RADII: 1/16R. | MACHINING TOLERANCES: FRACTIONS + 1/64 DECIMALS + .010 ANGLES + 1/2" FILLET RADII: 1/32 R. MACHINED FINISH, Ra: 125u IN. Ⓢ ⊥ ≠ □ ○ WITHIN 1/64 FIM |  245 PEGASUS AVE, NORTHVALE, NJ 07647 (201)767-4027 WWW.PAPAILIAS.COM | | | |
| | | MODEL#: 1/2" TUH/316 1/2" NPT SERIES TUH TUBULAR LIQUID LEVEL GAUGE | | | |
| THIS DRAWING IS THE SOLE PROPERTY OF THE J.G. PAPAILIAS COMPANY, INC. AND NEITHER THE DOCUMENT NOR THE INFORMATION CONTAINED HEREIN SHALL BE COPIED, REPRODUCED, DISCLOSED OR TRANSFERRED, EXCEPT AS AUTHORIZED IN WRITING. | | DRAWN: GCP 05/09/13 CHECKED: GCP 05/09/13 APPROVED: | SIZE: C CAGE CODE: 12740 SCALE: | DRAWING NO.: 050TUH316XXX REV.: 0 WT: | SHEET 1 OF 1 |